

The United Methodist Church in the U.S. (Total)

Members: 7,679,850

Average Attendance: 3,125,513

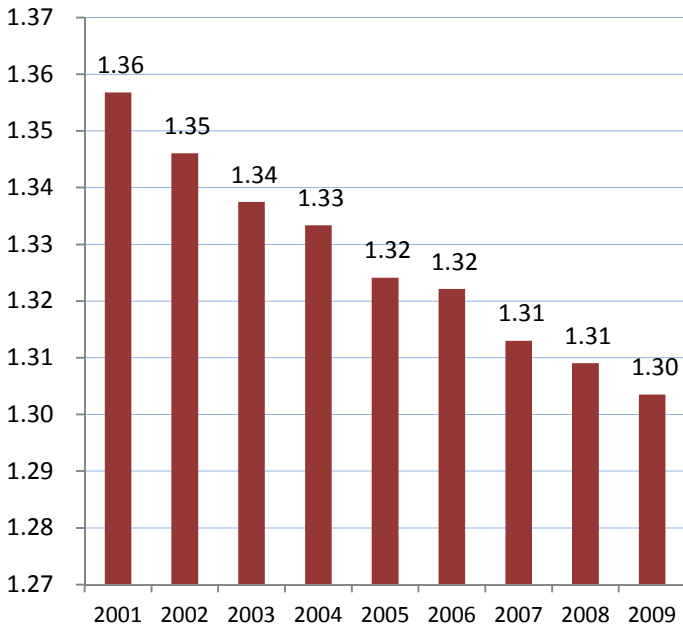
Professions of Faith: 135,291

Area (Sq. Mi.): 3,794,083

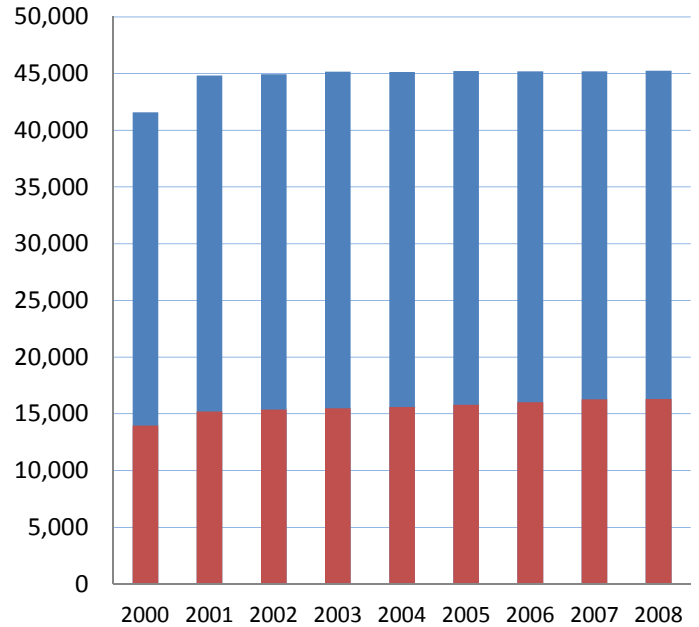
Area Population: 320,264,966

Number of Districts: 434

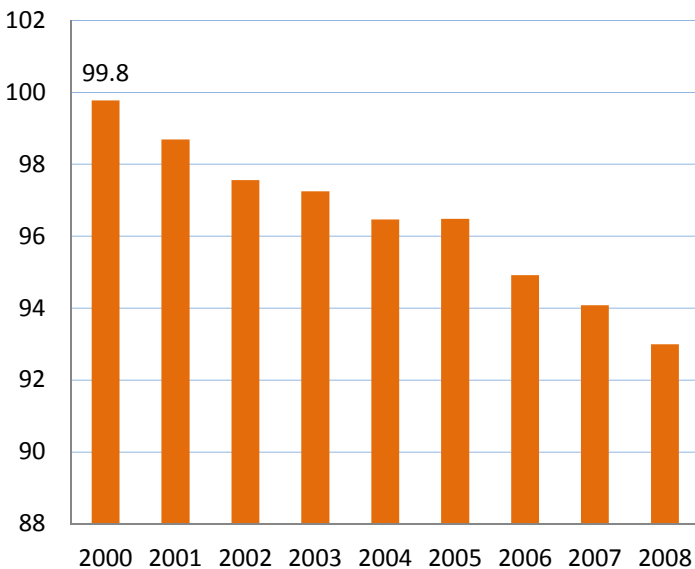
Churches per Charge



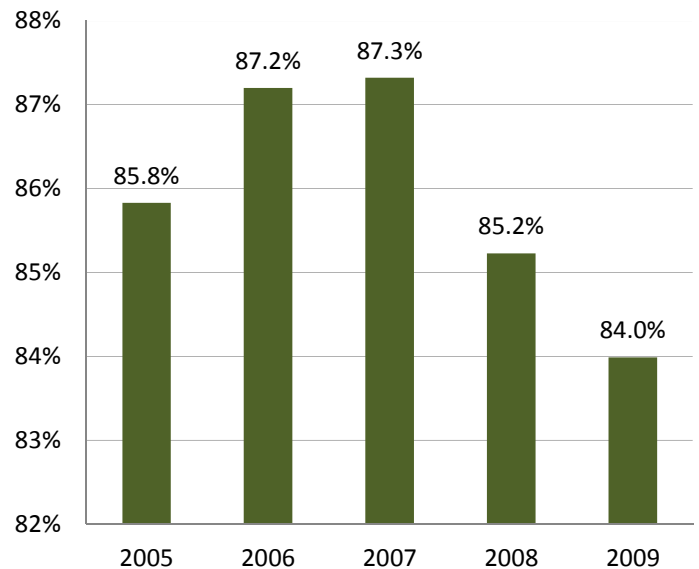
Active and Retired Clergy



Worship Attendees per Church



Percentage Paid on Apportionments



The United Methodist Church in the U.S. (Total)—2009

Number of churches not reporting average worship attendance in 2009: 847

Attendance Category	1-49	50-99	100-199	200-499	500-999	1000+	TOTAL
Number of churches	16,116	8,347	4,853	2,716	551	184	33,614
Number of pastoral charges	10,152	6,894	4,651	2,696	548	183	25,124
Percentage of total professing membership	13.2%	18.2%	21.7%	25.6%	11.6%	9.0%	
Percentage of total average worship attendance	13.9%	16.5%	18.3%	22.3%	13.1%	15.9%	100.0%
Change in total membership in size category since 2004	-124,715	-118,435	-111,645	-59,257	29,950	73,451	-310,651
Change in total average worship attendance in size category since 2004	-76,998	-61,419	-64,283	-43,627	648	23,510	-222,169
Average congregational debt per attendee	\$105	\$401	\$833	\$1,587	\$2,605	\$2,290	\$1,236
Share of total apportionments (conference and general funds)	11.9%	17.7%	21.9%	27.4%	12.4%	8.7%	100.0%
Percentage paid on apportionments	81.7%	79.6%	84.0%	90.9%	93.7%	93.5%	86.8%
Share of all local church expenditures in the conference (excluding debt service and capital expenditures)	10.5%	14.0%	17.5%	22.8%	15.3%	19.9%	100.0%
All expenditures (excluding debt service and capital expenditures) per attendee	\$1,198	\$1,343	\$1,516	\$1,627	\$1,861	\$1,994	\$1,618
Spending on pastor salaries, allowances and reimbursements, per attendee	\$105	\$401	\$833	\$1,587	\$2,605	\$2,290	\$386
Spending on lay, deacon and diaconal staff compensation, per attendee	\$60	\$165	\$332	\$507	\$674	\$705	\$400
Spending on operations, per attendee	\$299	\$322	\$354	\$321	\$342	\$346	\$346